



Move your world

HILUX
REVO



INDUS MOTOR COMPANY LIMITED

ToyotaPakistanOfficial @ToyotaPak ToyotaPakistan www.toyota-indus.com

Contact Information

Indus Motor Company Limited
Plot No. N.W.Z./1/P-1, Port Qasim Authority,
Karachi, Pakistan. Phone: +92-21-34721100.
UAN: +92-21-111-86-96-82 (+92-21-111-TOYOTA)

Customer Assistance Centre

Toll Free: 0800-11123. Phone: +92-21-34721100.
Email: customer.relations@toyota-indus.com

For more information
SMS "REVO" to



Scan and Access
Toyota Bot

BUILT CONTINUE LEGACY

TO THE

GEN 01 - 1968



GEN 01 - 1973



GEN 03 - 1978



GEN 04 - 1983



GEN 05 - 1988



GEN 06 - 1997



GEN 07 - 2012



GEN 08 - 2016



Improved GEN 08 - 2023





UNMATCHED
HEADLINE
EVERY
TERRAIN

BUILT TO BE ADVENTUROUS

Test your limits for adventure and experience a thrill like never before with the new Revo GR-S. Soar across every hillside, splash through muddy terrains, and race down bumpy trails with confidence. Its new front grille honey-comb structure is designed to stand-out and endure maximum impact so you can venture into the unknown with ultimate reassurance.



New Premium Front Grille



GR Badge



New Fog Lamp Cover Design



Outside Rear View Mirror



Daytime Running Lamps & Smart LED Headlamps



GR-S 18-Inch Alloy Rims



Over Fender Molding



New Sports Bar



Tailgate Handle





**RACE YOUR
ULTIMATE
AMBI T I O N
WITH COMFORT
AND STYLE**

BUILT TO FEEL SPORTY

The interior of Revo GR-S is designed with the finest combination of leather and suede, engraved with GR-S emblems and aesthetic red accents, giving a unique mix of sporty and premium feel.

GR Engraved Steering Wheel



Premium Optitron Meter with GR-S Logo



4.2 Inch Color TFT MID



Push Start with Smart Entry



Dual Zone AC Control



Cruise Control



Power Outlets



BUILT TO BE LUXURIOUS

The interior of Revo GR-S is designed with the finest combination of leather and suede, engraved with GR-S emblems and aesthetic red accents giving a unique mix of sport and premium feel.

Premium Suede Leather Bucket Seats



Red Stitching and GR Emblems On Seats



Illuminated Driver Controls



8 Inch Audio with Apple Car Play and Android Auto



Driver 8-Way Power Seat



Rear AC Vents



GR Gear Selector





**UNMATCHED
CAPABILITIES.
EXCEPTIONAL
POWER.
UNCOMPROMISING
PERFORMANCE.**

BUILT TO BE UNSTOPPABLE

Powered with the best engine, Revo GR-S is built to ensure unmatched performance across the toughest terrains. Personified with dynamic force, the major focus of this vehicle is its fuel system and torque. Now accelerate into each quest with fewer vibrations, muffled harshness and limitless power.

Engine Details

The Revo GR-S boasts a new generation 2.8L 1GD-FTV Engine, making it a force to be reckoned with.

Max Output: 150KW @ 3000-3400 RPM

Max Torque: 500NM @ 1600-2800 RPM



Paddle Shifters

Seamlessly shift your gear with just the touch of a button, whether you're cruising on the highway or navigating through traffic.



Red GR Brake Callipers

GRS Brake Callipers are designed to deliver reliable braking performance that enhances the vehicle's overall handling and maneuverability, while providing a quick and responsive braking capability.



Advanced Monotube Shock Absorbers

Designed for maximum off-road performance and comfort, this system provides improved response and durability even in the toughest driving conditions on any terrain with confidence and comfort.



BUILT UNFORGETTABLE ADVENTURE

FOR

The new Pro Sport offers select 4x4 functionality and a durable body-on-frame platform to produce the perfect mix of unbridled power with revolutionary agility to conquer the unknown.

Active
Control (A-TRC)



Traction

Downhill
Control (DAC)



Assist

Hill
Control (HAC)



Assist

Rear Differential Lock



4WD Drivetrain



Trailer Sway Control (TSC)



Limited
Differential (LSD)



Slip

BUILT TO BE INVINCIBLE

Equipped with advanced safety system, Revo GR-S assures you are protected on whatever journey you take. The body-on-frame impact-absorbing structure has the ability to keep all occupants secure, giving you complete peace of mind at all times.

Front 3-Pointer ELR Seat Belts with Pretensioner and Force Limiters



Immobilizer with Alarm



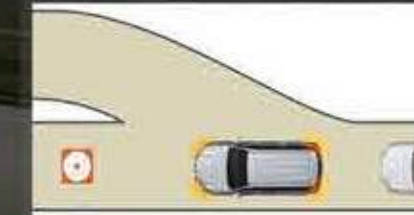
SRS Airbags and Seat Belts Reminder



ABS with EDB and BA



Emergency Brake Signal (EBS)



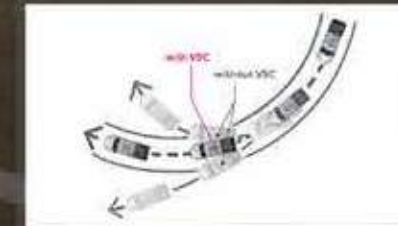
Speed Sensing Door Locks



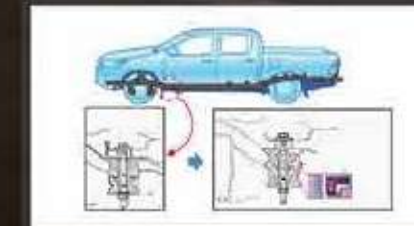
Drive Start Control



Vehicle Stability Control



Refined Suspension and Cabin Mounts



ISOFIX Child Seat Anchors



Impact Absorbing Structure



TECHNICAL SPECIFICATIONS



A white Toyota Hilux pickup truck is shown driving on a dirt road, kicking up a large cloud of dust. The truck is covered in mud splatters, suggesting it has been off-road. The background is a gradient of red and orange, with a blue sky visible in the upper left. The text "TECHNICAL SPECIFICATIONS" is overlaid in the top left corner.

VEHICLE	HILUX EREVO G M/TREVO G A/TREVO V A/TREVO ROCCO	REVO GR-S [NEW]
MODEL CODE	GUN126R-DPFLXP GUN126R-DPFSXP GUN126R-DPTSXP GUN126R-DPTHXP GUN126R-DPTHXP	GUN126R-DPTHXP

ENGINE SPECIFICATION

PERFORMANCE

[illegible]

SPEC SHEET OF HILUX REVO GR SPORT BROCHURE

VEHICLE	HILUX E	REVO G M/T	REVO G A/T	REVO V A/T	REVO ROCCO	REVO GR-S [NEW]
MODEL CODE	GUN126R-DPFLXP	GUN126R-DPFSXP	GUN126R-DPTSXP	GUN126R-DPTHXP	GUN126R-DPTHXP	GUN126R-DPTHXP

INTERIOR

Cabin Scheme		Black	Black	Black	Black	Black	Black + GR S Red (New)
Seat Material		Premium Fabric	Premium Fabric	Premium Fabric	Leather	Leather	Leather
Door Trim		Fabric / Black	Fabric / Silver	Fabric / Silver	Leather / Silver	Leather / Silver	Leather + Smoke Silver Metallic with Red Stitching (New)
Instrument Panel		Material / Black	Silver / Black	Silver / Black	Chrome + Silver / Black	Chrome + Silver / Black	Smoke Silver Metallic + Black (New)
Console Box		O	O	O	O (With Air Register)	O (With Air Register)	O (With Air Register)
Power Door Lock		X	With Speed Auto Lock	With Speed Auto Lock	With Speed Auto Lock	With Speed Auto Lock	With Speed Auto Lock
Push Start		X	X	X	O	O	O with GR Brand Mark (New)
Wireless Key		X	Jack Knife	Jack Knife	Smart Key with Panic Button	Smart Key with Panic Button	GR Smart Key with Panic Button (New)
Door Handle		Colored	Chrome	Chrome	Chrome	Chrome	Colored/Painted (New)
Power Windows		X	O	O	O	O	O
Window Wiper		With Mist	Intermittent + Mist	Intermittent + Mist	Time Adjust Intermittent + Mist	Time Adjust Intermittent + Mist	Time Adjust Intermittent + Mist
Illuminated Entry		O	O	O	O	O	O
System Coat Hook		O	O	O	O	O	O
Shopping Hook		O	O	O	O	O	O
Sun Visor		D + P	D + P (Mirror w/ Lid)	D + P (Mirror w/ Lid)	D + P (Mirror w/ Lid)	D + P (Mirror w/ Lid)	D + P (Mirror w/ Lid)
Heater		O	O	O	O	O	O
Climate Control		Manual A/C	Manual A/C	Manual A/C	Dual Zone Auto A/C	Dual Zone Auto A/C	Dual Zone Auto A/C
Side Defroster		O	O	O	O	O	O
Cool & Hot Box		X	X	X	O	O	O
Head Rest		Separate, D + P	Separate, D + P	Separate, D + P	Separate, D + P	Separate, D + P	Separate, D + P
	Front Seat	Separate, 2	Separate, 2	Separate, 2	Separate, 3	Separate, 3	Separate, 3
	Rear Seat	O (with Cup Holders x 2)	O (with Cup Holders x 2)	O (with Cup Holders x 2)	O (with Cup Holders x 2)	O (with Cup Holders x 2)	O (with Cup Holders x 2)
Rear		Separate / Premium	Separate / Premium	Separate / Premium	Separate / Premium	Separate / Premium	Separate / Premium
Armrest	Type	Manual	Manual	Manual	Driver Seat Powered	Driver Seat Powered	Driver Seat Powered
Front Seat	System	Driver + Passenger	Driver + Passenger	Driver + Passenger	Driver + Passenger	Driver + Passenger	Driver + Passenger
	Slide Adjustment	Driver + Passenger	Driver + Passenger	Driver + Passenger	Driver + Passenger	Driver + Passenger	Driver + Passenger
	Recline Adjustment	Driver-Side	Driver-Side	Driver-Side	Driver-Side	Driver-Side	Driver-Side
	Height Adjustment	60:40 Split Tip-up	60:40 Split Tip-up	60:40 Split Tip-up	60:40 Split Tip-up	60:40 Split Tip-up	60:40 Split Tip-up
Rear Seat		O	O	O	O (2 Connectors)	O (2 Connectors)	O (2 Connectors)
Accessory Connector	12 V DC	X	X	X	O	O	O
	220 V AC	Urethane	Urethane	Urethane	Leather	Leather	Leather + GR Red Stitching Pattern + GR Emblem (New)
Steering	Type	X	Audio, Tel, VR, MID Premium	Audio, Tel, VR, MID Premium	Audio, Tel, VR, MID Premium	Audio, Tel, VR, MID Premium	Audio, Tel, VR, MID Premium
	Fingertip Controls	Standard	Premium Optitron with Metal-Tone Dials	Premium Optitron with Metal-Tone Dials	Premium Optitron with Metal-Tone Dials	Premium Optitron with Metal-Tone Dials	Premium GR Optitron with Metal-Tone Dials (New)
Speedometer		X	Large Color TFT	Large Color TFT	Large Color TFT	Large Color TFT	Large Color TFT
Multi Info Display		O	O	O	O	O	O
Economy Meter		X	8" Capacitive Display (New)	8" Capacitive Display (New)	8" Capacitive Display (New)	8" Capacitive Display (New)	8" Capacitive Display (New)
Infotainment System	Screen		Bluetooth, USB Port, MIC, Car Play, Android Auto (New)	Bluetooth, USB Port, MIC, Car Play, Android Auto (New)	Bluetooth, USB Port, MIC, Car Play, Android Auto (New)	Bluetooth, USB Port, MIC, Car Play, Android Auto (New)	Bluetooth, USB Port, MIC, Car Play, Android Auto (New)
	Inputs	X	With Android Auto / Car Play (New)	With Android Auto / Car Play (New)	With Android Auto / Car Play (New)	With Android Auto / Car Play (New)	With Android Auto / Car Play (New)
	Navigation	X	4 Speakers	4 Speakers	6 Speakers	6 Speakers	6 Speakers
	Speakers	2 Speakers / Audio Ready	O	O	O	O	O
	Rear Camera	X					

SPEC SHEET OF HILUX REVO GR SPORT BROCHURE

VEHICLE	HILUX EREVO G M/T	REVO G A/T	REVO V A/T	REVO ROCCO	REVO GR-S [NEW]
MODEL CODE	GUN126R-DPFLXP GUN126R-DPFSXP	GUN126R-DPTSXP	GUN126R-DPTHXP	GUN126R-DPTHXP	GUN126R-DPTHXP

EXTERIOR

Headlamp	Bulb	Halogen	Halogen (4-Bulb)	Halogen (4-Bulb)	Bi-Beam LED PES	Bi-Beam LED PES	Bi-Beam LED PES
	Leveling System	X	X	X	Automatic	Automatic	Automatic
		Standard	Smart (Auto Operate & Follow-Me)	Smart (Auto Operate & Follow-Me)	Smart (Auto Operate & Follow-Me)	Smart (Auto Operate & Follow-Me)	Smart (Auto Operate & Follow-Me)
Daytime Running		X	X	X	O	O	O
Lamps Front Grille		Material Color	Material with Gray Painted Outer Grille	Material with Gray Painted Outer Grille	Black Paint with Chrome Outer Grille	Material Black with Black Outer Grille and Chrome Garnish	Piano Black with Colored Outer Grille and GR Badge (New)
Front Foglamp		Halogen	LED	LED	LED	LED with Exclusive Bezel	LED with Piano Black Bezel (New)
Side-turn Signal		On Fender	On Outer Mirrors	On Outer Mirrors	On Outer Mirrors	On Outer Mirrors	On Outer Mirrors
Outer Rear View Mirror		Black	Chrome + Power Retractable	Chrome + Power Retractable	Chrome + Power Retractable	Material Black + Power Retractable	Piano Black + Power Retractable (New)
Door Handle		Material	Colored	Colored	Chrome	Material Black	Body Colored (New)
Doorbelt Moulding		Black	Silver	Silver	Silver	Silver	Silver
Over-fender Moulding		X	X	X	X	Rocco Design Over Fender	GRS Design Over Fender (New)
Hood Moulding		Material Color	Gray Painted	Gray Painted	Chrome	Material Black	Colored/Painted (New)
Side Visors		X	O	O	O	O	O
Side Step		X	O	O	O	O	O
Sports Bar (New)		X	X	X	X	O (with Deck Illumination)	O (with Deck Illumination)
Deck Guard Frame		O	X	X	X	X	X
Rear Glass		Sliding	Sliding	Sliding	Sliding	Sliding	Sliding
Tail lamps		Halogen	Halogen	Halogen	LED	LED	LED
High Mount Stop Lamp		X	LED	LED	LED	LED	LED
Tailgate Handle		Material	Material with Tailgate Key	Material with Tailgate Key	Chrome	Material Black with Tailgate Garnish	Material Black
		Painted	Painted	Painted	Painted	Painted Rocco Design with Gray Painted Skid Plate	Painted GRS Design with Two-Tone Paint (New)
Bumper	Front						
	Rear	Painted with Step	Chrome with Step	Chrome with Step	Chrome with Step	Gray Paint with Step	Material Black with Step (New)
Mud Guard Air		Front + Rear	Front + Rear	Front + Rear	Front + Rear	Front + Rear	Front + Rear

Safety

Vehicle Stability Control		X	With A-TRC + HAC + TSC	With A-TRC + HAC + TSC	With A-TRC + HAC + TSC + DAC + LSD	With A-TRC + HAC + TSC + DAC + LSD	With A-TRC + HAC + TSC + DAC + LSD
Emergency Brake Signal		X	O	O	O	O	O
Drive Start Control		X	O	O	O	O	O
Tire-Turning Angle (Shown in MID) Clearance Sonar (New)		X	X	X	Front x 2 + Rear x 4	Front x 2 + Rear x 4	Front x 2 + Rear x 4
Engine Oil Leveling Warning		O	O	O	O	O	O
Light Reminder		O	O	O	O	O	O
Key Reminder		O	O	O	Smart Key Function	Smart Key Function	Smart Key Function
Shift-Lock System		X	X	O	O	O	O
Clutch-Start Safety		O	O	X	X	X	X
Anti-Theft System		Immobilizer	Immobilizer with Horn	Immobilizer with Horn	Immobilizer with Horn	Immobilizer with Horn	Immobilizer with Horn
Anti-Lock Braking System		O	O	O	O	O	O
Seatbelt	Front Seat	3-point ELR x 2 + P/T + F/L	3-point ELR x 2 + P/T + F/L	3-point ELR x 2 + P/T + F/L	3-point ELR x 2 + P/T + F/L	3-point ELR x 2 + P/T + F/L	3-point ELR x 2 + P/T + F/L
Child Restraint System	Rear Seat	3-point ELR x 2 + 2-point NR	3-point ELR x 2 + 2-point NR	3-point ELR x 2 + 2-point NR	3-point ELR x 3	3-point ELR x 3	3-point ELR x 3
	ISOFIX Child Seat Anchors	X	X	X	O	O	O
	Front Airbag	Dual (Driver + Passenger)	Dual (Driver + Passenger)	Dual (Driver + Passenger)	Dual (Driver + Passenger)	Dual (Driver + Passenger)	Dual (Driver + Passenger)
SRS Airbag	Knee Airbag	X	Driver	Driver	Driver	Driver	Driver
	On/Off Switch	X	O	O	O	O	O
	Airbag Indicator	X	O	O	O	O	O

*Indus Motor Company reserves the right to alter any details of specifications and equipment without notice. Vehicles shown and specifications mentioned herein may vary from models and equipment available.

HILUX
REVO **GR**
SPORT



Attitude
Black



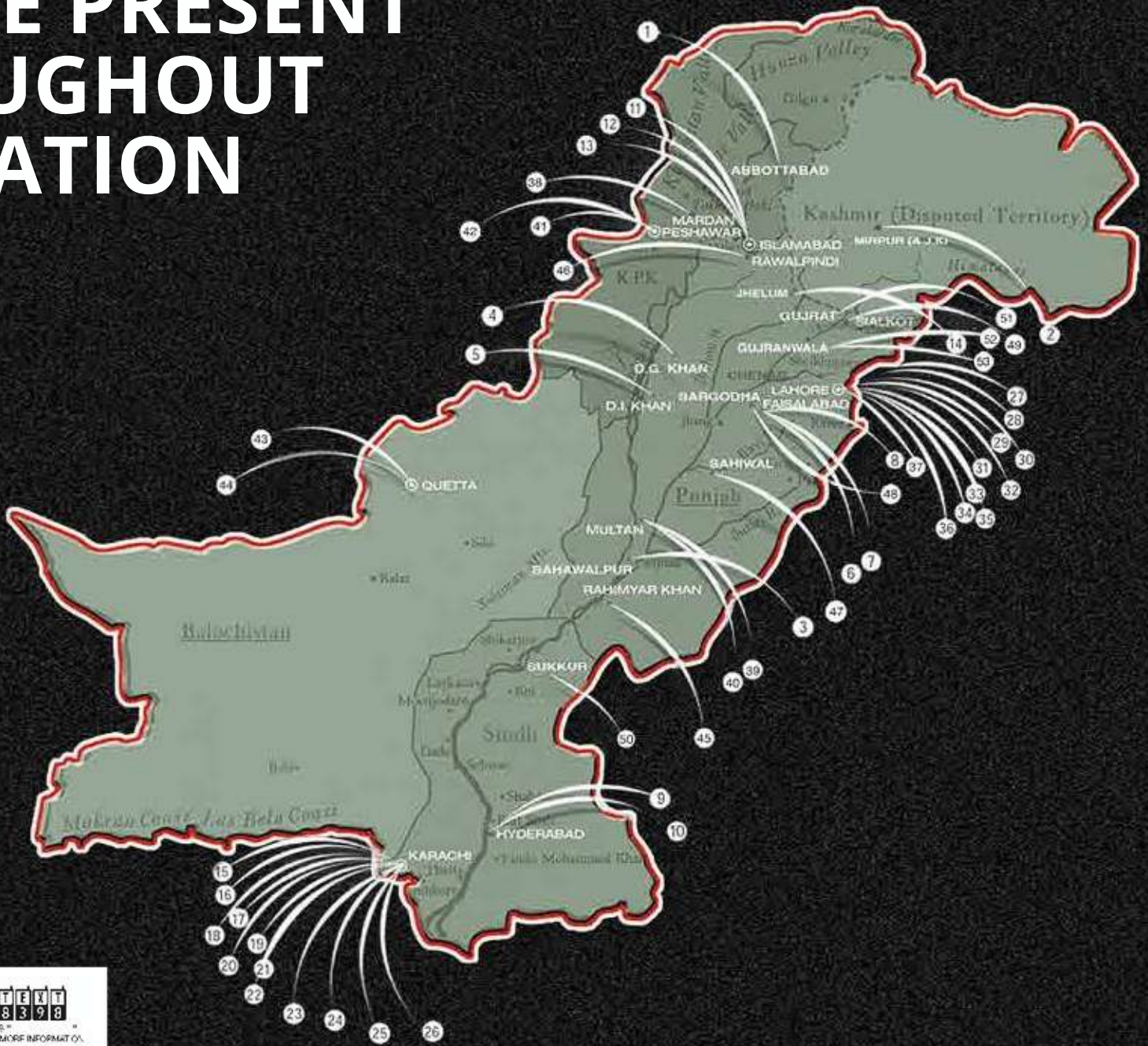
Super
White

BUILT TO BE **UNBEATABLE**



Move your world

WE ARE PRESENT
THROUGHOUT
THE NATION



ABBOTTABAD LAHORE

- 1. TOYOTA ABBOTT MOTOR - PHONE: (0992) 38088227. TOYOTA RAVI MOTORS - PHONE: (042) 35426961-64, 37580705, 111-700-900
- 2. TOYOTA AZAD MOTORS - PHONE: (05827) 432803-5 / 434297-9929. TOYOTA TOWNSHIP MOTORS - PHONE: (042) 35885014 / 111-393-939
- 3. TOYOTA BAHAWALPUR MOTORS - PHONE: (062) 2889941-42, 111-111-167 (042) 111-383-838 / 37597670 (D)
- 4. TOYOTA GARDEN MOTORS - PHONE: (042) 111-595-959 / 35868256
- 5. TOYOTA WALTON MOTORS - PHONE: (042) 111-008-009 / 36662981-82
- 6. TOYOTA D.G. KHAN MOTORS - PHONE: (092) 64-2845626
- 7. TOYOTA D.I. KHAN MOTORS - PHONE: (042) 36613401-10
- 8. TOYOTA AIRPORT MOTORS - PHONE: (042) 111-880-990
- 9. TOYOTA D.I. KHAN MOTORS - PHONE: (0966) 716891 (0966) 716792-3
- 10. TOYOTA JINNAH MOTORS - PHONE: (042) 111-119-696
- 11. TOYOTA HN MOTORS - PHONE: (042) 111-000-095
- 12. TOYOTA FAISALABAD MOTORS - PHONE: (041) 8719902, 8712002, 8712004 3 7. TOYOTA GATEWAY MOTORS - PHONE: (042) 111-220-220
- 13. TOYOTA LYALLPUR MOTORS - PHONE: (041) 8811021-2438. TOYOTA MARDAN MOTORS - PHONE: (0937) 873005 (0937) 873001-4
- 14. TOYOTA CHENAB MOTORS - PHONE: (041) 2423790, 2423793
- 15. TOYOTA MULTAN MOTORS - PHONE: (061) 6522481 (061) 6522482-83 / 111-111-343
- 16. TOYOTA HYDERABAD MOTORS - PHONE: (022) 3885121-540. TOYOTA CITY MOTORS - PHONE: (061) 4580792
- 17. TOYOTA POINT MOTORS - PHONE: (022) 2661770-3 (061) 111-111-342 / 4541925 / 4580793 / 4542488
- 18. TOYOTA FRONTIER MOTORS - PHONE: (091) 5701002-5 / 5841626 / 111-235-236
- 19. TOYOTA CAPITAL MOTORS - PHONE: (051) 4432027 (051) 4431711 / 111-142-142
- 20. TOYOTA KHYBER MOTORS - PHONE: (091) 2586931-4
- 21. TOYOTA ISLAMABAD MOTORS - PHONE: (051) 2820533 (051) 2270461-6 / 111-000-037
- 22. TOYOTA GT MOTORS - PHONE: (051) 2227607, 2227860-4
- 23. TOYOTA ZARGHOON MOTORS - PHONE: (081) 2450444
- 24. TOYOTA QUETTA MOTORS - PHONE: (081) 111-876-876
- 25. TOYOTA JHELUM MOTORS - PHONE: (0544) 275467-68
- 26. TOYOTA ROYAL MOTORS - PHONE: (068) 5885090-92
- 27. TOYOTA CENTRAL MOTORS - PHONE: (021) 34311155 (021) 111-786-122 / 34532246-50 / 34536246-49 46. TOYOTA RAWAL MOTORS - PHONE: (051) 4917214 (051) 4917200-4
- 28. TOYOTA SOCIETY MOTORS - PHONE: (021) 34381027 / 34383213-4 / 111-786-113
- 29. TOYOTA EASTERN MOTORS - PHONE: (021) 34614077 / 3461417747. TOYOTA SAHIWAL MOTORS - PHONE: (040) 4502345-6 (042) 111-700-900
- 30. TOYOTA UNIVERSITY MOTORS - PHONE: (021) 34940417 / 34941747
- 31. TOYOTA SOUTHERN MOTORS - PHONE: (021) 111-876-111 / 35062478 / 35053181-6 48. TOYOTA SARGODHA MOTORS - PHONE: (048) 3221801-02 / 111-222-456
- 32. TOYOTA DEFENCE MOTORS - PHONE: (021) 111-836-836 / 35888314 / 35386022-7 (021) 32020583
- 33. TOYOTA SIALKOT CITY MOTORS - PHONE: (052) 3308131-33 & 37
- 34. TOYOTA WESTERN MOTORS - PHONE: (021) 32572420 (021) 32564531-5 / 111-800-786
- 35. TOYOTA SUKKUR MOTORS - PHONE: (024) 3558141-43 / (071) 111-785-587
- 36. TOYOTA SHAHRAH-E-FAISAL MOTORS - PHONE: (021) 34600518-20
- 37. TOYOTA HIGHWAY MOTORS - PHONE: (021) 36880702-04 / 111-009-000
- 38. TOYOTA GUJRAT MOTORS - PHONE: (053) 111-111-153
- 39. TOYOTA CREEK MOTORS - PHONE: (021) 35092211-3
- 40. TOYOTA CLIFTON MOTORS - PHONE: (021) 3530252352. TOYOTA FORT MOTORS - PHONE: (055) 111-111-836
- 41. TOYOTA PORT QASIM MOTORS - PHONE: (021) 38910507-953. TOYOTA CANAL MOTORS - PHONE: 0322-6133339

Dealerships marked with * have T-Sure service available.



Customer
Toll Free: 0800 11123

TEXT
8398
FOR MORE INFORMATION



TOYOTA
GENUINE PARTS



TOYOTA
QUALITY SERVICE



100,000
3 YEAR



EXCHANGE
NO EASE



HILUX
REVO

**GO
WILD**



HILUX
REVO

GO
BEYOND





HIROKI NAKAJIMA *HILUX EXECUTIVE CHIEF ENGINEER*

The all new Hilux is designed to exceed expectations, ushering in a new era of thinking with respect to the pickup truck. While the all new Hilux has advanced in every respect, including the toughness that it has been renowned for and its new emotional value, explaining each of these points fails to capture the essence of this new Hilux. I encourage each of you to spend time to admire and drive the new Hilux. Only then will you be able to appreciate the new sense of refined toughness and feel the passion that created a new era for pickup.

H. Nakajima



TABLE OF CONTENTS

01	A LEGACY OF POWER
03	GO LIMITLESS
05	GO POWERFUL
07	GO EXTRAVAGANT
11	GO KEYLESS
13	GO EQUIPPED
15	GO LAVISH
17	GO PROTECTED
21	STABILITY CONTROLS
23	4X4 POWER PACKS
25	KEY FEATURES
27	RANGE
29	SPECIFICATIONS
31	DEALER NETWORK
33	ACCESSORIES & COLOURS

A LEGACY OF POWER

GEN 01 - 1968

It was March 1968 when Toyota dealerships in Japan took delivery of the first genuine Toyota Hilux pickup. This new model bore the N10 chassis code, and although it was conceived by Toyota, the new Hilux continued to be engineered and built at Hino Motors' Hamura Plant.



GEN 02 - 1973

The second-generation Hilux was launched in May 1972 for the 1973 model year, and marked the model's introduction to the UK market. Essentially a reworked version of its predecessor, the N20 series featured an updated body with slightly extended wheelbase, more comfortable interior and carry-over engine range.



GEN 03 - 1978

Versatility was the watchword for the third-generation N30 series Hilux. Regardless of model – there were now three standard length and four long wheelbase derivatives – the third-gen Hilux was designed to offer saloon-like specifications and ride comfort, which led to an evolution of the predecessor's double wishbone front suspension.



GEN 04 - 1983

The newer fourth generation vehicle was immediately characterized from its older sibling by its attractively blistered arches and renewed interior. For a while it was available alongside its predecessor, which remained on sale in the domestic market as a rear-wheel drive base model.



GEN 05 - 1988

September 1988 marked the introduction of the new fifth-generation N50 chassis Hilux, with revised bodywork that represented many visual and physical improvements over the outgoing version. It was built on the three core concepts of power, sturdiness and comfort.



GEN 06 - 1997

The range was introduced in Japan in September 1997 and is easily distinguished from the previous generation models by a swage line that gently tapers downwards toward the front indicators. The biggest change for the sixth-generation was that all Hilux models now came with independent front suspension – the first time in the history of the Toyota Hilux.



GEN 07 - 2012

The seventh-generation N70 chassis Hilux grew significantly in stature to become classified as a midsize pickup. This change gifted the vehicle with greater road presence, interior space and load capacity. All improvements identified from customer reports.



GEN 08 - 2016

The new generation Hilux Revo carries forward the legacy of power and performance with redefined ruggedness and a new upgraded engine for maximum power on and off the road.



GO WILD



The powerful new Hilux Revo is the epitome of raw power, intelligent technology, and refined luxury. Designed to overcome the most challenging of terrains, its rugged yet stylish exterior coupled with its comfortable interior provides the ideal driving experience on even the longest and toughest of journeys.

No matter where, no matter when, when it's time to go, Go Wild with Hilux Revo.

GO LIMITLESS



UNDER THE HOOD

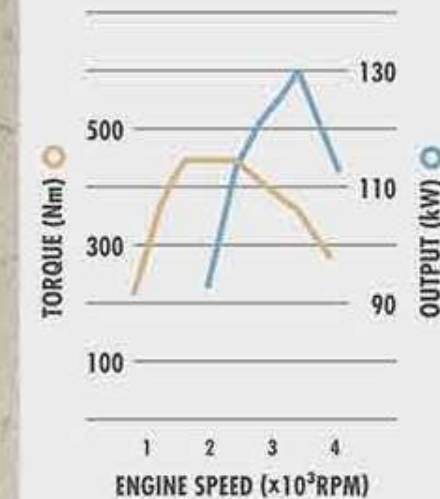
The new generation diesel engine is designed to be more efficient, powerful, and quieter.

NEW FOUND POWER

The newly developed, compact and ultra-efficient 1GD, 2.8L four-cylinder diesel engine with turbocharger and Intercooler delivers improved engine power and performance with the added advantage of enhanced fuel efficiency and reduced engine noise for a smoother and more comfortable drive.

PERFORMANCE

The new 1GD, 2.8L four-cylinder diesel engine with turbocharger and Intercooler delivers maximum output of 130kW/3400rpm and maximum torque of 450Nm/1600-2400rpm.



POWERFUL TRANSMISSION

The newly developed Hilux Revo's 6-speed automatic sequential transmission and 6-speed manual transmission ensure a smooth driving feel with the added advantages of:

- Wide gear ranges for excellent power and fuel efficiency
- Low friction

Driving response and acceleration management system (only for 6-speed Automatic Transmission)

ECO/POWER MODES

The Drive Mode Switch allows the driver to select a preferred drive mode.

ECO Mode

Prioritizes fuel economy by limiting power consumption of the air conditioning system.

POWER Mode

Provides sharper acceleration response, ensuring a more agile drive on slopes and winding roads.

GO POWERFUL

GO WILD





GO
EXTRAVAGANT

DAY-TIME RUNNING LAMPS



18" ALLOY RIMS



**LED HEADLAMPS
WITH SMART OPERATION**



CHROME DOOR HANDLES



LED FOG LAMPS



BOLD FRONT GRILLE



40
MIN

SLIDING REAR WINDOW



REAR BUMPER WITH EASY STEP



**WIDE STORAGE CAPACITY WITH
WIDE SPACIOUS DECK**



SPORTY TAIL LAMPS



GO KEYLESS

GO
WILD

ENGINE
START
STOP

SMART ENTRY & PUSH START

The ultra-stylish and convenient **Smart Entry and Start System** enables the driver to lock and unlock the vehicle's door just by carrying the key and pushing the outside door handle switch, while the Push Start button lets you start and stop the engine at the push of a button without the use of a key.



AUTO A/C CONTROLS

The compact and powerful air conditioning system allows for quick and easy adjustment of the comfortable cabin atmosphere with top-class level cooling performance.

OPTITRON + COLOUR LCD DISPLAY

The high precision and luxurious colour TFT 4.2" Multi-information Display ensures higher visibility of the vehicle's information while driving.



HOT AND COOL BOX

A convenient upper glove box with ventilation function to help keep beverages and items hot and cool during long drives.

CRUISE CONTROL

Cruisetronic Switch offers the driver ease during journeys, while allowing the driver to put the car in auto mode at a constant speed, without the accelerator pedal being pressed.

POWER OUTLETS

Convenient 12V DC and 220V AC sockets to keep your electronic devices and accessories charged on the go.



GO EQUIPPED

GO

LAVISH

STYLE WITH ULTIMATE COMFORT

The New Hilux Revo combines toughness and functionality to create a comfortable, sophisticated, and satisfying cabin atmosphere.

DRIVER POWERED SEAT

Recliner

Length Adjustment

Height Adjustment

REAR ARMREST WITH CUP HOLDERS

Provides passengers with comfort and a convenient storage for beverages during trips.

ILLUMINATED CONTROLS

Provide greater visibility of buttons in low-light conditions.

OVERHEAD CONSOLE & INTERIOR LAMP

Allows for convenient storage and illumination of the frontal cabin area.

PREMIUM QUALITY LEATHER

Premium quality leather stitched seats add a new dimension of luxury and comfort to the Hilux Revo's interior.



**GO
PROTECTED**



SAFETY AIRBAGS

The **SRS (Supplemental Restraint System)** airbags inflate when the vehicle is subjected to certain types of severe impacts that may cause significant injury to the occupants. They work together with the seat belts to help reduce the risk of death or serious injury. They can help protect the head and chest of the driver and front passenger from impact with interior components. SRS front airbags do not generally inflate if the vehicle is involved in a side or rear collision, if it rolls over, or if it is involved in a low-speed frontal collision.



AIRBAG INDICATOR LIGHT

Informs whether the passenger seat airbag system is on or off



AIRBAG MANUAL ON/OFF SWITCH

Allows the front passenger airbag system to be switched on and off manually*

*Front passenger airbag should only be deactivated when using a child restraint system on the front passenger seat.



ABS WITH EBD AND BA

ABS helps prevent wheel lock when the brakes are applied suddenly, or if the brakes are applied while driving on a slippery road surface. **Electronic Brake Distribution (EBD)** helps ensure excellent vehicle stability and contributes to the realization of excellent braking performance. **Brake Assist (BA)** helps generate an increased level of braking force, after the brake pedal is depressed, when the system detects a panic stop situation.



IMMOBILIZER

The vehicle's Security System features an in-built immobilizer to help prevent the engine from starting unless the correct key is available. An alarm horn system also helps protect the vehicle against unauthorized use.



IMPACT ABSORBING AND HIGH STRENGTH STRUCTURE

The frame and body structure of the new Hilux Revo is designed to help reduce passenger injuries. High tensile steel sheets, specially developed crumple zones, and impact absorbing structures help reduce impact force in the unlikely event of an accident.



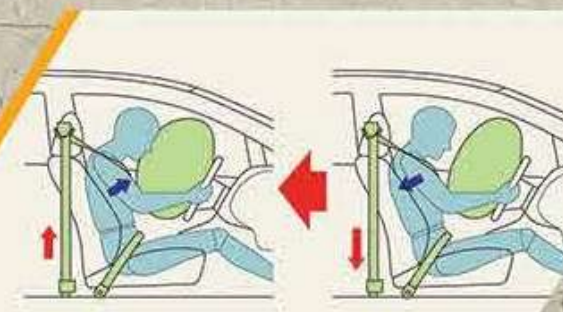
SRS KNEE AIRBAG

Along with dual (driver + passenger) airbags, the vehicle also comes equipped with SRS driver knee airbag to help provide additional protection to the driver.



ISOFIX CHILD SEAT* ANCHORS

ISOFIX is an international standard for fitting a child seat safely and simply. The child seat is attached to the vehicle's body securely using anchors and mountings.



3 POINT EMERGENCY LOCKING RETRACTOR (ELR)

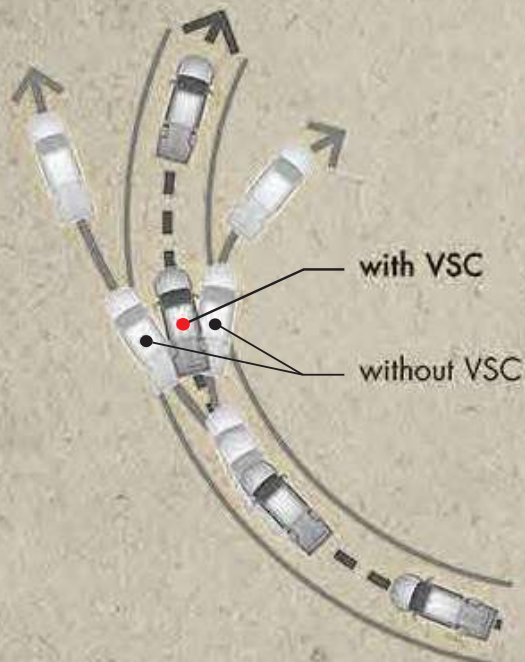
The pretensioner helps the seat belts to quickly restrain the occupants by retracting when the vehicle is subjected to certain types of severe frontal collisions. Force limiters mitigate the impact applied to the chest, thus contributing to achieving excellent occupant restraint performance.

*Child Seat is not included with the vehicle.

STABILITY CONTROLS

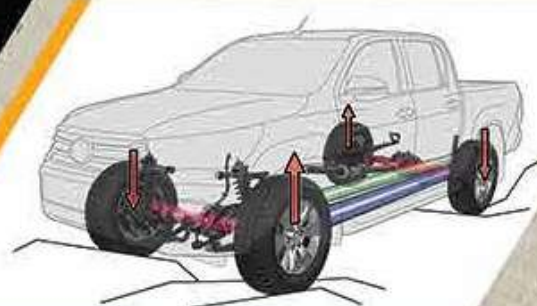
VEHICLE STABILITY CONTROL (VSC)

To ensure vehicle stability, VSC helps automatically control the wheel brakes, and engine output, to suppress oversteering and understeering while the vehicle is turning.



ACTIVE TRACTION CONTROL (A-TRC)

Optimally distributes power to each wheel for higher levels of off-road ground covering and acceleration performance on slippery surfaces.



without Hill-start Assist Control



HILL-START ASSIST CONTROL (HAC)

Automatically performs brake control to help suppress rollback, while starting the vehicle, when it is on a slope.

DOWNHILL ASSIST CONTROL (DAC)

Automatically maintains a low vehicle speed while driving down steep slopes by controlling brake fluid pressure.

without Downhill Assist Control



without Trailer Sway Control



with Trailer Sway Control



TRAILER SWAY CONTROL (TSC)

Suppresses trailer movement before it becomes too large via brake control and engine output control during cross winds, unsteady road surfaces and steering operations to help provide control while towing a trailer.

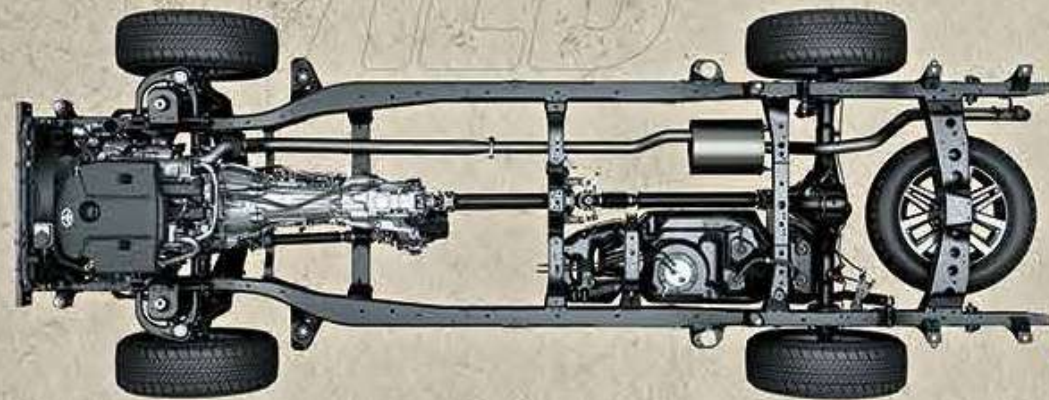
4X4 POWER PACKS

ELECTRONIC TRANSFER SWITCH*

The electronic transfer switch enhances operability and convenience by allowing easy switching between H2, H4 and L4 modes.



*Please refer Owner's Manual for proper usage of Electronic Transfer Switch operation (4WD).



RIGID FRAME STRUCTURE

Newly developed frame structure with improved rigidity, demonstrates exceptional durability performance in extreme conditions.



DIFFERENTIAL LOCK SYSTEM

The differential lock helps secure traction when driving in muddy terrain or in unlikely situations when the vehicle gets stuck.





**LED HEADLAMPS
WITH SMART OPERATION**

18-INCH ALLOY RIMS

DAY-TIME RUNNING LAMPS

SIDE MIRRORS



REAR BUMPER WITH STEP

CHROME DOOR HANDLES

TAILGATE STOP-LAMP

LED FRONT FOG LAMPS



POWERED DRIVER SEAT

REAR SLIDING WINDOW

SMART ENTRY CONTROL

STEERING SWITCHES



SHOPPING BAG HOOK

DIGITAL CLOCK

ECO LAMP WITH DISPLAY

CRUISE CONTROL

COAT HOOK



7" INFOTAINMENT SYSTEM

**REAR ARMREST WITH
CUP HOLDERS**

COOLING CUP HOLDERS

SUNGLASSES HOLDER + LAMP LIGHT



HOT AND COOL BOX

AUTO AC

OPTITRON+ COLOUR LCD DISPLAY

ILLUMINATED CENTRAL CONTROLS

A RANGE FOR EVERY TERRAIN



HILUX E M/T

REVO G M/T



REVO V A/T

REVO G A/T

		HILUX E GUN126R-DPFLHP	REVO G M/T GUN126R-DPFMHP	REVO G A/T GUN126R-DPTMHP	REVO V A/T GUN126R-DPTHHP
INTERIOR					
Cabin Scheme		Black	Bronze	Bronze	Bronze
Seat Material		Fabric	Premium Fabric	Premium Fabric	Leather
Door Trim		Fabric/Black	Fabric/Silver	Fabric/Silver	Leather/Silver
Instrument Panel		Material/Black	Silver/Black	Silver/Black	Chrome + Silver/Black
Power Door Lock		X	0	0	0
Push Start NEW		X	X	X	0
Wireless Key		X	Jack Knife	Jack Knife	Smart Key with Panic Button NEW
Door Handle		Coloured	Chrome	Chrome	Chrome
Power Window		X	0	0	0
Window Wiper		With Mist	Intermittent + Mist	Intermittent + Mist	Time Adjust Intermittent + Mist
Illuminated Entry System		X	0	0	0
Coat Hook		0	0	0	0
Shopping Hooks		X	0	0	0
Sun Visor		D + P	D + P (Mirror w/Lid)	D + P (Mirror w/Lid)	D + P (Mirror w/Lid)
Heater		0	0	0	0
Air Conditioner		Manual A/C NEW	Manual A/C	Manual A/C	Auto A/C
Side Defroster		0	0	0	0
Cool & Hot Box		X	X	X	0
Head Rest	Front Seat	Integrated, D + P	Separate, D + P	Separate, D + P	Separate, D + P
	Rear Seat	Separate, 2	Separate, 2	Separate, 2	Separate, 3
Rear Armrest		X	0	0	0
Front Seat	Type	4:6 for 2 persons	Separate/Premium	Separate/Premium	Separate/Premium
	System	Manual	Manual	Manual	Driver Seat Powered
	Slide Adjustmnt	Driver-Side	Driver + Passenger	Driver + Passenger	Driver + Passenger
	Recline Adjustmnt	Driver + Passenger	Driver + Passenger	Driver + Passenger	Driver + Passenger
	Height Adjustmnt	X	Driver-Side	Driver-Side	Driver-Side
Accessory Connector	12V DC	0	0	0	0
	220V AC	X	X	X	0
Steering	Type	Urethane	Urethane	Urethane	Leather
	Fingertip Controls	X	Audio, Tel, VR, MID	Audio, Tel, VR, MID	Audio, Tel, VR, MID Premium
Speedometer		Standard	Premium	Premium	Premium, Optitron
Multi-Info Display		X	Small/Monochrome	Small/Monochrome	Large Colour TFT
Economy Meter		X	X	0	0
Infotainment System	Screen	X	7" Capacitive Display	7" Capacitive Display	7" Capacitive Display
	Inputs	X	DVD, Bluetooth, Screen Mirroring, Voice Recognition, USB, HDMI	DVD, Bluetooth, Screen Mirroring, Voice Recognition, USB, HDMI	DVD, Bluetooth, Memory Card, Screen Mirroring, Voice Recognition, USB, HDMI, Air Gestures
	Navigation	X	0	0	0
	Speakers	2 Speakers/Audio Ready	4 Speakers	4 Speakers	6 Speakers
	Rear Camera	X	0	0	0
EXTERIOR					
Headlamp	Bulb	Halogen	Halogen	Halogen	LED PES
	Leveling	X	X	X	Automatic
	System	Standard	Standard	Standard	Smart (Auto Operate & Follow-Me)
Daytime Running Lamp		X	X	X	0
Front Grille		Material Colour	Chrome	Chrome	Chrome
Front Fog Lamp		Halogen	Halogen	Halogen	LED NEW
Side-turn Signal		On Fenders	On Outer Mirrors	On Outer Mirrors	On Outer Mirrors
Outer Rear View Mirror		Black	Chrome + Power Retractable	Chrome + Power Retractable	Chrome + Power Retractable
Door Handle		Coloured	Coloured	Coloured	Chrome
Door Belt Moulding		Black	Silver	Silver	Silver
Side Visors		X	0	0	0
Side-Steps		X	0	0	0
Deck Guard		0	X	X	X
Rear Glass		Sliding	Sliding	Sliding	Sliding
Tailgate Handle		Material	Material	Material	Chrome
Bumper	Front	Painted	Painted	Painted	Painted
	Rear	Painted with Step	Chrome with Step	Chrome with Step	Chrome with Step
Mud Guard		Front + Rear	Front + Rear	Front + Rear	Front + Rear
Air Spat		Front + Rear	Front + Rear	Front + Rear	Front + Rear

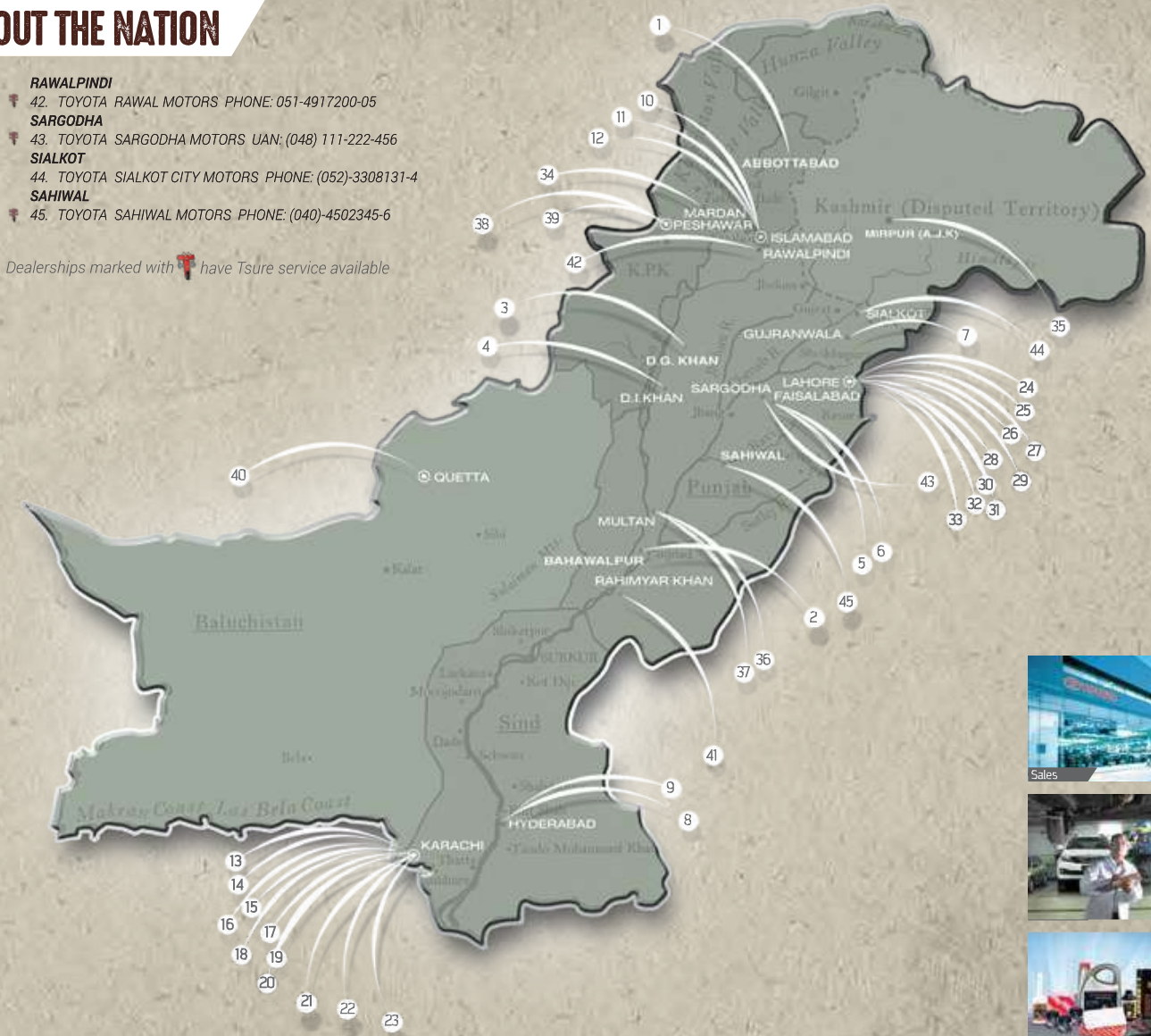


WE ARE PRESENT THROUGHOUT THE NATION

- ABBOTTABAD**
 1. TOYOTA ABBOTT MOTORS PHONE: (0992) 406902
- BAHAWALPUR**
 2. TOYOTA BAHAWALPUR MOTORS PHONE: (062) 2889941
- D. G. KHAN**
 3. TOYOTA D. G. KHAN MOTORS UAN: (064) 111-222-737
- D. I. KHAN**
 4. TOYOTA D. I. KHAN MOTORS PHONE: (0966) 716792-3
- FAISALABAD**
 5. TOYOTA FAISALABAD MOTORS UAN: (041) 111-000-052
 6. TOYOTA LYALLPUR MOTORS UAN: (041) 111-000-856
- GUJRANWALA**
 7. TOYOTA GUJRANWALA MOTORS UAN: (055)-111-000-183
- HYDERABAD**
 8. TOYOTA HYDERABAD MOTORS UAN: (022) 111-555-121
 9. TOYOTA POINT MOTORS UAN: (022) 111-000-876
- ISLAMABAD**
 10. TOYOTA CAPITAL MOTORS UAN: (051) 111-142-142
 11. TOYOTA G. T. MOTORS PHONE: (051) 2227860-4
 12. TOYOTA ISLAMABAD MOTORS UAN: (051) 111-000-037
- KARACHI**
 13. TOYOTA CENTRAL MOTORS UAN: (021) 111-786-122
 14. TOYOTA CLIFTON MOTORS UAN: (021) 111-800-777
 PHONE: (021) 35302501-6
 15. TOYOTA CREEK MOTORS PHONE: (021) 35092211-5
 16. TOYOTA DEFENCE MOTORS UAN: (021) 111-836-836
 17. TOYOTA EASTERN MOTORS UAN: (021) 111-836-111
 18. TOYOTA HIGHWAY MOTORS UAN: (021) 111-009-000
 19. TOYOTA SHAHRAH-E-FAISAL MOTORS PHONE: (021) 34600519-20
 20. TOYOTA SOCIETY MOTORS UAN: (021) 111-786-113
 21. TOYOTA SOUTHERN MOTORS UAN: (021) 111-876-111
 22. TOYOTA UNIVERSITY MOTORS UAN: (021) 111-886-111
 23. TOYOTA WESTERN MOTORS UAN: (021) 111-800-786
- LAHORE**
 24. TOYOTA AIRPORT MOTORS UAN: (042) 111-880-990
 25. TOYOTA CANTT MOTORS UAN: (042) 111-828-628
 26. TOYOTA GARDEN MOTORS UAN: (042) 111-595-959
 27. TOYOTA HN MOTORS UAN: (042) 111-000-095
 28. TOYOTA JINNAH MOTORS UAN: (042) 111-119-696
 29. TOYOTA RAVI MOTORS UAN: (042) 111-700-900
 30. TOYOTA SAHARA MOTORS UAN: (042) 111-383-838
 31. TOYOTA SHAHEEN MOTORS UAN: (042) 111-300-700
 32. TOYOTA TOWNSHIP MOTORS UAN: (042) 111-393-939
 33. TOYOTA WALTON MOTORS UAN: (042) 111-008-009
- MARDAN**
 34. TOYOTA MARDAN MOTORS PHONE: (0937) 873001-3
- MIRPUR (AJK)**
 35. TOYOTA AZAD MOTORS PHONE: (05827) 432803
- MULTAN**
 36. TOYOTA CITY MOTORS UAN: (061) 111-111-342
 37. TOYOTA MULTAN MOTORS UAN: (061) 111-111-343
- PESHAWAR**
 38. TOYOTA FRONTIER MOTORS UAN: (091) 111-235-236
 39. TOYOTA KHYBER MOTORS PHONE: (091) 2586931-34
- QUETTA**
 40. TOYOTA ZARGHOON MOTORS PHONE: (081) 2450444
- RAHIM YAR KHAN**
 41. TOYOTA ROYAL MOTORS UAN: (068) 111-111-185

- RAWALPINDI**
 42. TOYOTA RAWAL MOTORS PHONE: 051-4917200-05
- SARGODHA**
 43. TOYOTA SARGODHA MOTORS UAN: (048) 111-222-456
- SIALKOT**
 44. TOYOTA SIALKOT CITY MOTORS PHONE: (052)-3308131-4
- SAHIWAL**
 45. TOYOTA SAHIWAL MOTORS PHONE: (040)-4502345-6

Dealerships marked with  have Tsure service available










FOR MORE INFORMATION
SMS "REVO" TO 8398

*Terms and Conditions Apply.

SATISFACTION IN GETTING MORE THAN A CAR

When you buy a Toyota from Indus Motor Company Limited, you're buying more than just a car. You're buying a promise that gives you all the assurance, trust, support, efficiency and convenience you need. In line with our "Customer First" belief, your satisfaction is our priority. It is this simple philosophy at Indus Motor Company Limited that has made Toyota a leading automobile brand across Pakistan.

Total peace of mind comes from 2 YEARS OR 50,000 km Mileage Warranty, high levels of Quality, Durability and Reliability (Q.D.R.) with an impact-absorbing shell and high integrity cabin that has attained the world's top level of safety to give you unparalleled protection. Whether it's maintenance or grooming, our Genuine Parts and state-of-the-art precision tools will also keep your car performing like it ought to be - a Toyota.

ACCESSORISE YOUR REVO



Roof Tray



Sports Bar

SELECT YOUR COLOUR



- Vehicles' body colours are subject to availability
- Colours may vary from illustrations.

*Select White instead of Super White in Hilux-E



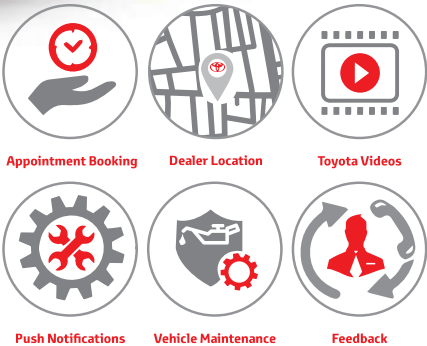
DRIVE IN WITH
ANY **USED**
DRIVE OUT WITH
THE **NEW**

Keep your app updated for the additional features



INDUS MOTOR COMPANY LTD. | **TOYOTA**

www.toyota-indus.com | [ToyotaPakistanOfficial](#) | [@ToyotaPak](#)





Contact Information

Indus Motor Company Limited
Plot No. N.W.Z./1/P-1, Port Qasim Authority,
Karachi, Pakistan.
Phone: +92-21-34721100
UAN: +92-21-111-86-96-82 (+92-21-111-TOYOTA)

Customer Assistance Centre

Toll Free: 0800-11123
Phone: +92-21-34721100
Email: customer.relations@toyota-indus.com

FOR MORE INFORMATION
SMS "REVO" TO **TEXT 8398**

www.toyota-indus.com

[f](#) / toyotapakistanofficial

[t](#) @ToyotaPak